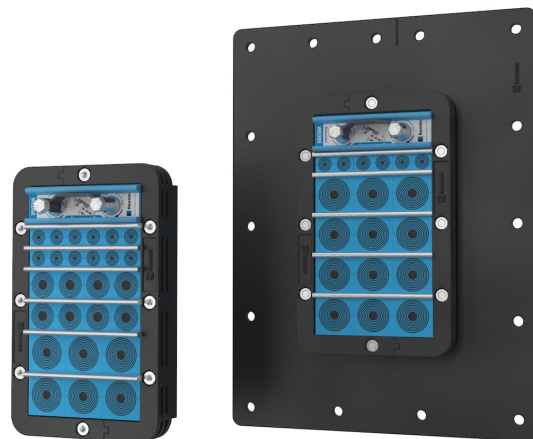








Roxtec KFO doorvoer

Lichtgewicht kabelafdichting voor behuizingen

De Roxtec C KFO doorvoer is een kabelafdichtingsoplossing voor verschillende soorten kasten, en is ideaal wanneer het gewicht zo laag mogelijk moet worden gehouden. Het frame is gemaakt van composiet (PA) en is verkrijgbaar in een enkele opening, en met of zonder flens.



-  Knaagdierbestendig
-  Lichtgewicht
-  Ideaal voor retrofittoepassingen
-  Eenvoudig te onderhouden en inspecteren

Producteigenschappen



IP/UL NEMA

Installatiestructuur



Kasten en behuizingen

Specificaties en certificaten

Dichtheid

-  IP 55

Afmetingen frame

mm/kg

De onderstaande frame-uitvoeringen zijn een beperkte selectie. Ga naar [roxtec.com](https://www.roxtec.com) voor het volledige assortiment frames en configuraties.

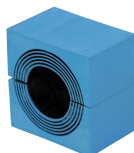
Titel	Frame-openingen	Vrije doorvoerruimte	Buitenafmetingen WxHxD	Afmetingen opening w x h	Gewicht	Art. nr.
C KFO 6x1	1	120 x 180	159 x 260 x 30	123(-2) x 223	0.6	CKF0000060059
C KFO 6x1 WITH FLANGE	1	120 x 180	319 x 420 x 30	170(+5/-5) x 270(+5/-5)	1.4	CKF1000060059
C KFO COUNTER FRAME					0.39	KFC0000100011

Gegevens van afdichtcomponenten

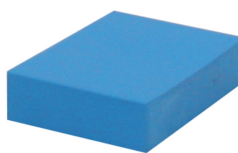
Afdichtcomponenten



C Wedge en Wedgekit



CM module met Multidiameter™



Massieve CM compensatiemodule



C fixeerplaat



vetstick

Ga naar [roxtec.com](https://www.roxtec.com) voor uitgebreide informatie.



The product information provided by Roxtec does not release the purchaser of the Roxtec system, or part thereof, from the obligation to independently determine the suitability of the products for the intended process, installation and/or use.

Roxtec gives no guarantee for the Roxtec system or any part thereof and assumes no liability for any loss or damage whatsoever, whether direct, indirect, consequential, loss of profit or otherwise, occurred or caused by the Roxtec systems or installations containing components not manufactured by an authorized manufacturer and/or occurred or caused by the use of the Roxtec system in a manner or for an application other than for which the Roxtec system was designed or intended.

Roxtec expressly excludes any implied warranties of merchantability and fitness for a particular purpose and all other express or implied representations and warranties provided by statute or common law. User determines suitability of the Roxtec system for intended use and assumes all risk and liability in connection therewith. In no event shall Roxtec be liable for indirect, consequential, punitive, special, exemplary or incidental damages or losses.

The Roxtec products are offered and sold in accordance with the conditions of the Roxtec General Terms of Sales. The latest version of the Roxtec General Terms of Sales can be downloaded from <https://www.roxtec.com/en/about-us/about-roxtec/general-terms-of-sales/>

We reserve the right to make changes to the product and technical information without further notice. Any errors in print or entry are no claims for indemnity. The content of this publication is the property of Roxtec International AB and is protected by copyright.

This document was generated on: 2024-04-23